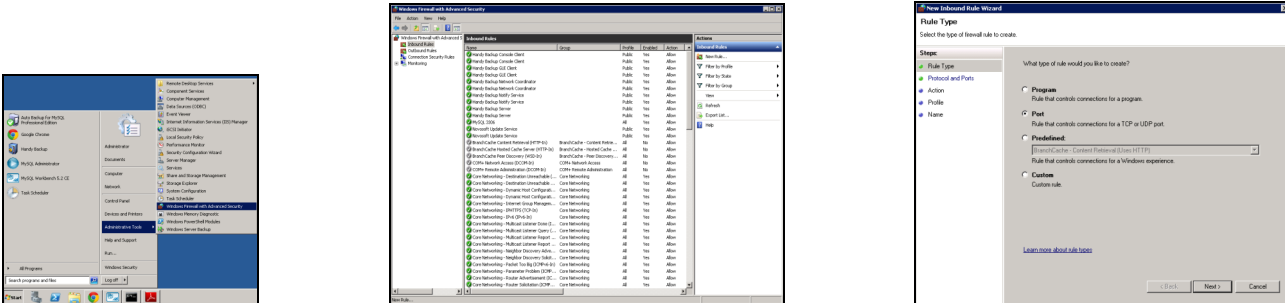


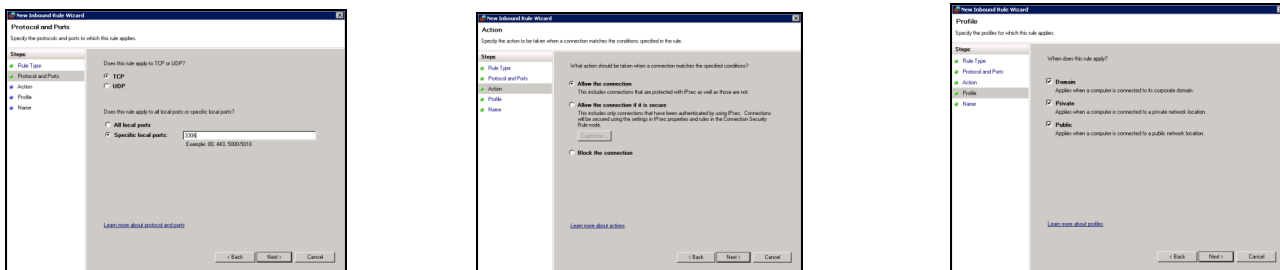
Section 9 – Configuring and Setting Up POS and Form Designer

Now that you have the JMC Web server setup and running, the next step is to configure the server so that it will allow connections from the **JMC POS** and **Form Designer** applications. To do this, we have to open up port 3306 on the server.

Go to the **Start** menu, and up and over to the right to **Administrative Tools**, and then up and over to **Windows Firewall with Advanced Security**. In that window, click on **Inbound Rules** in the upper left, and **New Rule...** in the upper right. At the first screen of the wizard, click on **Port** and then **Next**.



Select **TCP** at the top, and put in **3306** in **Specific local ports** at the bottom, and click on **Next**. Then select **Allow the connection** at the top, and click on **Next**. Then you can just leave all of the selections checked, and click on **Next**.



Then put in a name for this rule. For example, **MySQL Port 3306**, and then click on **Finish**. The new rule will now be listed at the top, so you can exit by clicking on the X in the top right corner.



You now need to configure any computer(s) that will run the **JMC POS** and/or **Form Designer** applications, so that they can communicate with the JMC Web server. We suggest you install **Form Designer** on at least one computer in each building in the district.

Windows Client

First, you will need to download and install an **ODBC Connector**. Here are the links to the correct ones.

Win XP – Win 7 - <http://downloads.mysql.com/archives/mysql-connector-odbc-5.1/mysql-connector-odbc-5.1.8-win32.msi>

Win 8 and Higher - <http://downloads.mysql.com/archives/mysql-connector-odbc-5.1/mysql-connector-odbc-5.1.11-win32.msi>

Once you have downloaded the installer, go find it and run the installer. When the installer comes up, the only window you have to do anything on is the **License Agreement** window. Accept it, and click **Next**, and then leave the other screens alone and follow through the install.

Now let's configure the **ODBC Administrator** that will allow the **JMC POS** and/or **Form Designer** to communicate with the JMC Web server.

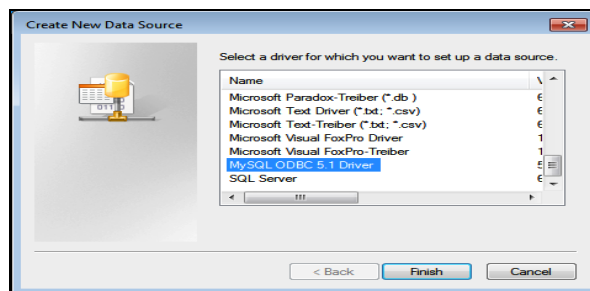
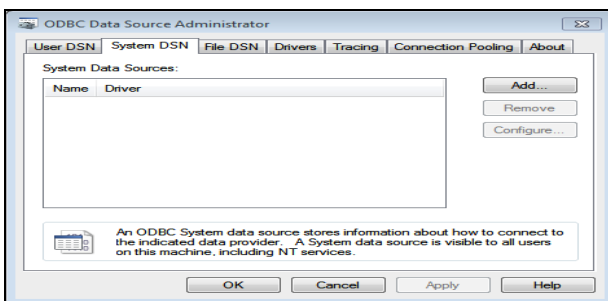
To launch **ODBC Administrator** on a Windows XP client, go to the **Start** menu and over to **Search**. Choose to search for **Files and Folders**, and type in **Data Sources**. When it comes up, you can stop the search, and double-click on Data Sources.

To launch **ODBC Administrator** on a Windows 7 or Vista, 32-bit client, go to the **Start** menu and in the **Search** field where the cursor is flashing, type in **Data Sources**, and you will see it at the top, so double-click on it.

If you are using a 64-bit version of Windows 7, Vista or Windows 8 on the client computer, you will need to run the 64-bit version of **Data Sources** instead. You can find it on the hard drive in the Windows:SysWOW64 folder. It is named **odbcad32**, so search for it in that folder and double-click on it.

To launch **ODBC Administrator** on a Windows 10 client, use the **Search** field next to the **Start** menu in the bottom left corner and type in **odbcad32**. It should show both the 32 and 64-bit versions, and you will want to click on the 32-bit version.

Here is what it looks like on a Windows client. First, click on the **System DSN** tab in the upper left corner, and then **Add...** to the right. Scroll down and highlight the **MySQL ODBC 5.1 Driver**, and click on **Finish**.

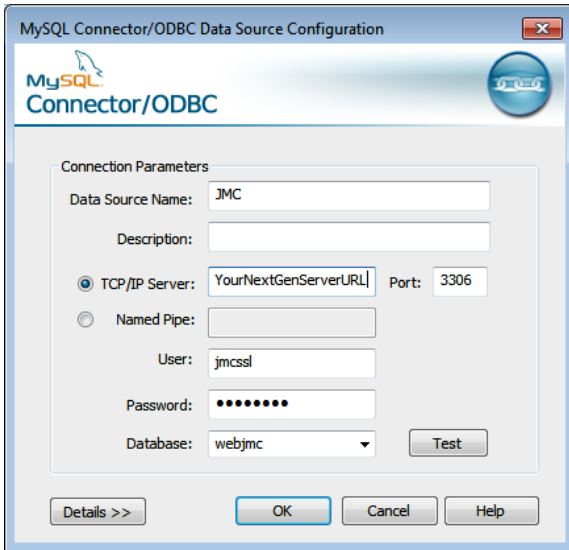


At the next screen, yours will look similar to below. You can put in any name you want in the **Data Source Name (DSN)**. You will need it later, so write it down. Put in your JMC Web server url or ip address, without the **http://**, in the **TCP/IP Server** field. Then put **jmcssl** in the **User**, and whatever the password is for the user **jmcssl** in **Password**.

Once you do that, click on the down arrow to the right of the **Database** field, and your **webjmc** database should be in the list, so click on it. Now click on **Test**, and it should tell you it was successful. Then click on **OK** twice. The client computer is now talking to your JMC Web server, so you are ready to run the **JMC POS**

and/or **Form Designer** application. When you run either application the first time, you will need the **DSN, User,** and **Password** from above.

Make sure the password for **jmcssl** has only 8 characters or less, and use only letters and numbers. If yours isn't that way, just go back into **MySQL Workbench** and change the password for **jmcssl**.



Macintosh Client

First, you will need to download and install an **ODBC Connector**. Here are the links to the correct ones.

10.4 Intel - <http://downloads.mysql.com/archives/mysql-connector-odbc-5.1/mysql-connector-odbc-5.1.8-osx10.4-x86-32bit.dmg>

10.4 PPC - <http://downloads.mysql.com/archives/mysql-connector-odbc-5.1/mysql-connector-odbc-5.1.6-osx10.4-powerpc-32bit.dmg>

10.5 or higher - <http://downloads.mysql.com/archives/mysql-connector-odbc-5.1/mysql-connector-odbc-5.1.8-osx10.5-x86-32bit.dmg>

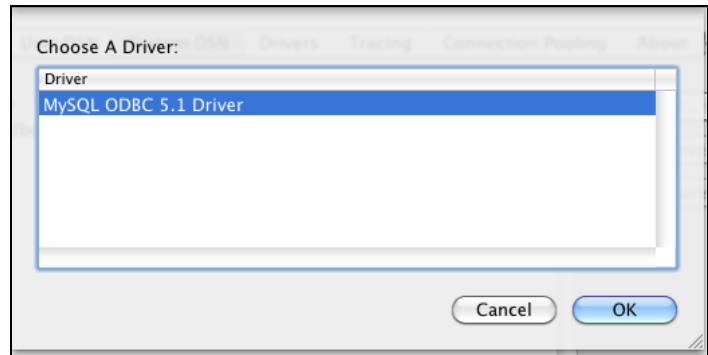
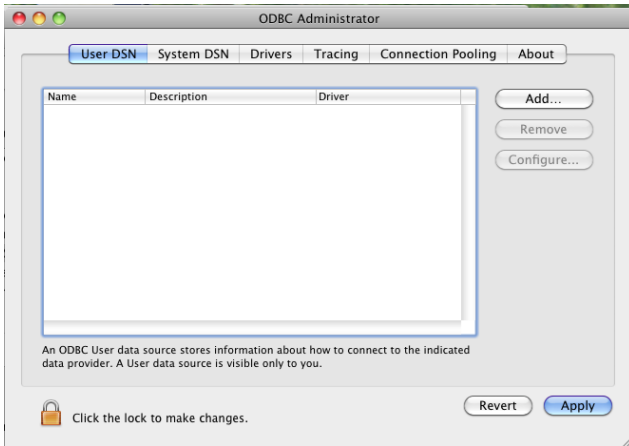
Neither Mac OS 10.6 or higher comes with **ODBC Administrator**. You have to download and install it before installing the connector you downloaded above.

To download the **ODBC Administrator for 10.6 or higher**, go to <http://support.apple.com/kb/DL895> and click on the **Download** button in the upper right corner. When you get it downloaded, navigate to it and install it, and follow the instructions to finish it.

Now that you have installed **ODBC Administrator**, go find the ODBC Connector installer and run it. When the installer comes up, the only window you have to do anything on is the **License Agreement** window. Accept it, and click **Next**, and then leave the other screens alone and follow through the install.

You will find **ODBC Administrator** in the **Utilities** folder, so go there and launch it.

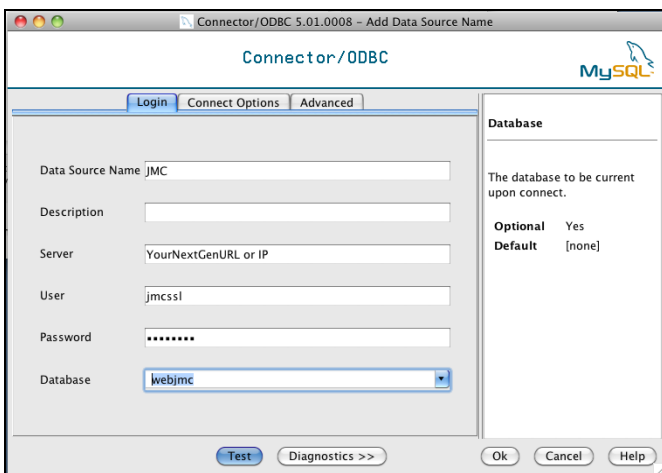
Here is what it looks like on a Macintosh client. First, click on the **User DSN** tab in the upper left corner, and then **Add...** to the right. Click on the **MySQL ODBC 5.1 Driver**, and click on **OK**.



At the next screen, yours will look similar to below. You can put in any name you want in the **Data Source Name (DSN)**. You will need it later, so write it down. Put in your JMC Web server url or ip address, without the **https://**, in the **TCP/IP Server** field. Then put **jmcssl** in the **User**, and whatever the password is for the user **jmcssl** in **Password**.

Click on the down arrow to the right of the **Database** field, and then click on your **webjmc** database in the list. Click on the **Test** button to the right, and it will tell you it was successful, so click on **OK**, and then **Apply**. Then click the **X** in the upper left corner to close.

Make sure the password for **jmcssl** has only 8 characters or less, and use only letters and numbers. If yours isn't that way, just go back into **MySQL Workbench** and change the password for **jmcssl**.



DSN : _____

User : jmcssl

Password : _____

If you need anything for your Next Generation web-based product, you can find it at <http://jmcinc.com/resources/nextgen>. This includes the **POS** and **Form Designer** installers. Just click on the **POS and Form Designer Downloads** tab to the right, and you will see them.

Windows POS and Form Designer

http://jmcinc.com/uploads/files/JMC_POS_Web_v4.2.zip

http://jmcinc.com/uploads/files/JMC_Form_Designer_Web_12-13.zip

Macintosh POS and Form Designer

http://jmcinc.com/uploads/files/JMC_POS_Web_v4.2.dmg

http://jmcinc.com/uploads/files/JMC_Form_Designer_Web_12-13.dmg

The first time you run either **POS** or **Form Designer**, you will need to put in the **Data Source Name (DSN) and User (jmcssl)**. **You do not need to put the Password in on this screen. Just click Login after putting in the Data Source Name and User.** After the first time, you should never see it again, but please keep this information at the computers that run POS or Form Designer anyway, in case it does come up.

If you have any issues connecting with **ODBC Administrator**, make sure your jmcssl password is correct, and make sure **port 3306** is open on your firewall.

You will also find tabs for all the other staff in your district, and each tab has the documentation, videos, etc. that they need to successfully operate JMC Next Generation.